

Niagara County Department of Health

THE COMMUNITY LOOW PROJECT
MAPPING SYSTEM

COMMUNITY LOOW PROJECT
PUBLIC MEETING
Niagara University
January 30, 2008

Greg Coniglio (Ecology & Environment, Inc.)

Lisa McFail (Ecology & Environment, Inc.)

Scott King (King Groundwater Science, Inc.)



Niagara County Department of Health

THE COMMUNITY LOOW PROJECT

MAPPING SYSTEM

PRESENTATION OVERVIEW

- Niagara County GIS Program Background
- Community LOOW Project GIS Database Development
- Community LOOW Project GIS Web Mapping Site
- Questions / Discussion

Niagara County Department of Health

THE COMMUNITY LOOW PROJECT


MAPPING SYSTEM

WHAT IS GIS?

“GIS is a collection of computer hardware, software, and geographic data for capturing, managing, analyzing, and displaying all forms of geographically referenced information”

Geographic information is stored in map ‘layers’





Niagara County Department of Health

THE COMMUNITY LOOW PROJECT


MAPPING SYSTEM

NIAGARA COUNTY GIS PROGRAM BACKGROUND

November 2006: Niagara County issues RFP for procuring a GIS Consultant for Countywide Enterprise GIS Development

- County-wide GIS “Geodatabase” Development
- County-wide GIS web-mapping site
- Intermunicipal agreement with Erie County to host Niagara County GIS database and web mapping sites.
- GIS Technical Support
- GIS Training and Application Development for Public Health, Sheriff, and Economic Development

January 2007: Project awarded to ecology and environment, inc. and kicked off



Niagara County Department of Health

THE COMMUNITY LOOW PROJECT

MAPPING SYSTEM

NIAGARA COUNTY GIS PROGRAM BACKGROUND

Spring-Summer 2007:

- Database Development (integration of huge sample database)
- "ArcGIS Server" internet mapper development

Autumn 2007:

- Migration to "ArcIMS" Server technology

December 2007 - Spring 2008:

- Erie / Niagara County GIS Partnership
- Site Hosting
- Current site, hosted at E&E
- Imminent migration to Erie County servers on behalf of Niagara County DOH

THE COMMUNITY LOOW PROJECT

MAPPING SYSTEM

ERIE / NIAGARA INTERMUNICIPAL AGREEMENT

Erie County and Niagara County have entered into a joint 'Intermunicipal Agreement' to share Emergency 911 and GIS Resources. Erie County will host the hardware and software for Niagara County's web mapping programs (including LOOW)

Screen 1 of 33

Erie and Niagara County Intermunicipal Agreement (IMA) Summary

The Erie and Niagara County IMA is a joint-agreement that is designed to primarily leverage Erie's current GIS infrastructure to enable Niagara County to offer similar GIS services to its departments, without incurring the high start-up costs associated with establishing an enterprise-level GIS. By sharing GIS services and resources, it is anticipated that both parties can expect the following benefits over the course of the 5-year contract term:

GIS Assistance: To t
agree to provide mut
assistance, and inform
Assistance, for each r
GIS Emergency Assist
or man-made disaste
mutual GIS assistance
County's respective I
Internet/ Intranet Ma
hosting and conductin
Services (IMS) using A

Niagara County Department of Health

THE COMMUNITY LOOW PROJECT

MAPPING SYSTEM


ERIE / NIAGARA SHARED MUNICIPAL SERVICES GRANT

A good portion of the funding for the microwave communications that will support this connection between the two counties. Check is still pending (and final deployment of the LOOW GIS site is waiting for this financial support)



State Assistance for Shared Municipal Services

Later in 2007, the Department of State will be soliciting applications for the 2007-2008 round of the **Shared Municipal Services Incentive Grant Program**. The grant application award eligibility criteria and reference materials will be available for download on the Department's web site.



Niagara County Department of Health

THE COMMUNITY LOOW PROJECT

MAPPING SYSTEM

COMMUNITY LOOW GIS DATABASE DESIGN

E & E and Scott King coordinated in the development of a geodatabase, to store the large amount of samples and related information in a *'normalized database'* Tables of information store different types of data about the project

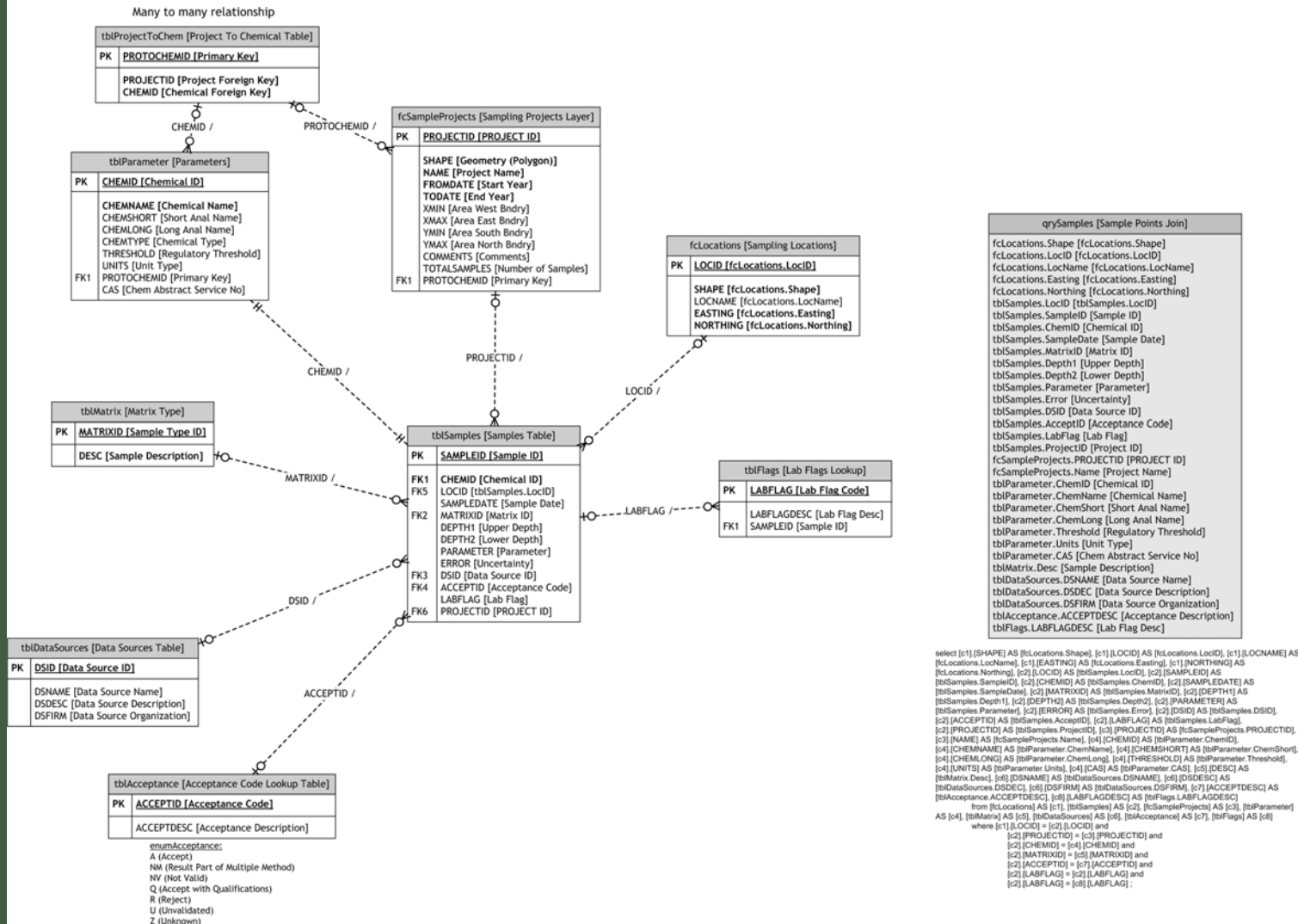
- Locations of Samples
- Sample Results
- Chemicals 'Parameters' Sampled
- Sample Types (Soil, Groundwater, etc.)
- Regulation Threshold Values for Parameters

Niagara County Department of Health

THE COMMUNITY LOOW PROJECT

MAPPING SYSTEM

COMMUNITY LOOW GIS DATABASE



Niagara County Department of Health

THE COMMUNITY LOOW PROJECT

MAPPING SYSTEM

ArcCatalog - ArcView - Database Connections\coniglio@gis_LOOW.sde\gis_LOOW.mcfaill.TBLSAMPLES

File Edit View Go Tools Window Help

Location: Database Connections\coniglio@gis_LOOW.sde\gis_LOOW.mcfaill.TBLSAMPLES

Stylesheet: FGDC ESRI

Contents Preview Metadata

OBJECTID	SAMPLEID	LOCID	SAMPLEDATE	MATRIXID	DEPTH_UPPER	DEPTH_LOWER	ERROR	DSID
132622	132622	924	7/12/1998	SO	2	4	0	
132623	132623	924	7/12/1998	SO	2	4	0	
132624	132624	924	7/12/1998	SO	2	4	0	
132625	132625	997	6/24/1998	SS	0	2	0	
132626	132626	997	6/24/1998	SS	0	2	0	
132627	132627	997	6/24/1998	SS	0	2	0	
132628	132628	997	6/24/1998	SS	0	2	0	
132629	132629	997	6/24/1998	SS	0	2	0	
132630	132630	997	6/24/1998	SS	0	2	0	
132631	132631	997	6/24/1998	SS	0	2	0	
132632	132632	997	6/24/1998	SS	0	2	0	
132633	132633	997	6/24/1998	SS	0	2	0	
132634	132634	997	6/24/1998	SS	0	2	0	
132635	132635	997	6/24/1998	SS	0	2	0	
132636	132636	997	6/24/1998	SS	0	2	0	
132637	132637	997	6/24/1998	SS	0	2	0	
132638	132638	997	6/24/1998	SS	0	2	0	
132639	132639	997	6/24/1998	SS	0	2	0	
132640	132640	997	6/24/1998	SS	0	2	0	
132641	132641	997	6/24/1998	SS	0	2	0	
132642	132642	997	6/24/1998	SS	0	2	0	
132643	132643	997	6/24/1998	SS	0	2	0	
132644	132644	997	6/24/1998	SS	0	2	0	
132645	132645	997	6/24/1998	SS	0	2	0	

Record: 8 Show: All Selected Records (of *2000) Options

THE COMMUNITY LOOW PROJECT

MAPPING SYSTEM

GEODATABASE DATA ENTRY

Radiological data from the 1983-1985 surveys performed by Bechtel are only available in PDF format. This information is being entered into the database, as well...

TABLE 2
POST-REMEDIAL ACTION SAMPLING RESULTS
FOR PROPERTY B

Grid Coordinates		Concentrations (pCi/g +/- 1 sigma)		
E,W	N,S	Uranium-238	Radium-226	Thorium-232
E5527	N3293	A	2.0 ± 0.3	1.6 ± 0.5
E5531	N3233	A	1.1 ± 0.3	1.0 ± 0.4
E5537	N3243	A	0.9 ± 0.2	A
E5537	N3283	A	4.1 ± 0.4	2.0 ± 0.4
E5537	N3303	A	1.1 ± 0.3	1.0 ± 0.4
E5538	N3328	A	4.7 ± 0.4	A
E5548	N3339	A	1.6 ± 0.2	3.9 ± 0.2
E5591	N3338	A	2.9 ± 0.4	0.3 ± 0.4
E5624	N3052	A	13.1 ± 0.7	A
E5627	N3042	A	1.0 ± 0.3	1.2 ± 0.4
E5636	N3052	A	0.6 ± 0.2	0.6 ± 0.3
E5663	N3323	A	14.8 ± 1.0	4.3 ± 0.7
E5664	N3236	A	11.8 ± 0.8	2.4 ± 0.5
E5664	N3274	A	13.0 ± 1.1	2.2 ± 0.6
E5669	N3307	A	4.1 ± 0.3	0.4 ± 0.2

'A' denotes less than detectable activity.



Niagara County Department of Health

THE COMMUNITY LOOW PROJECT
MAPPING SYSTEM

COMMUNITY LOOW GIS WEB ADDRESS

<http://communityloowproject.com>

(Beta site in final testing)